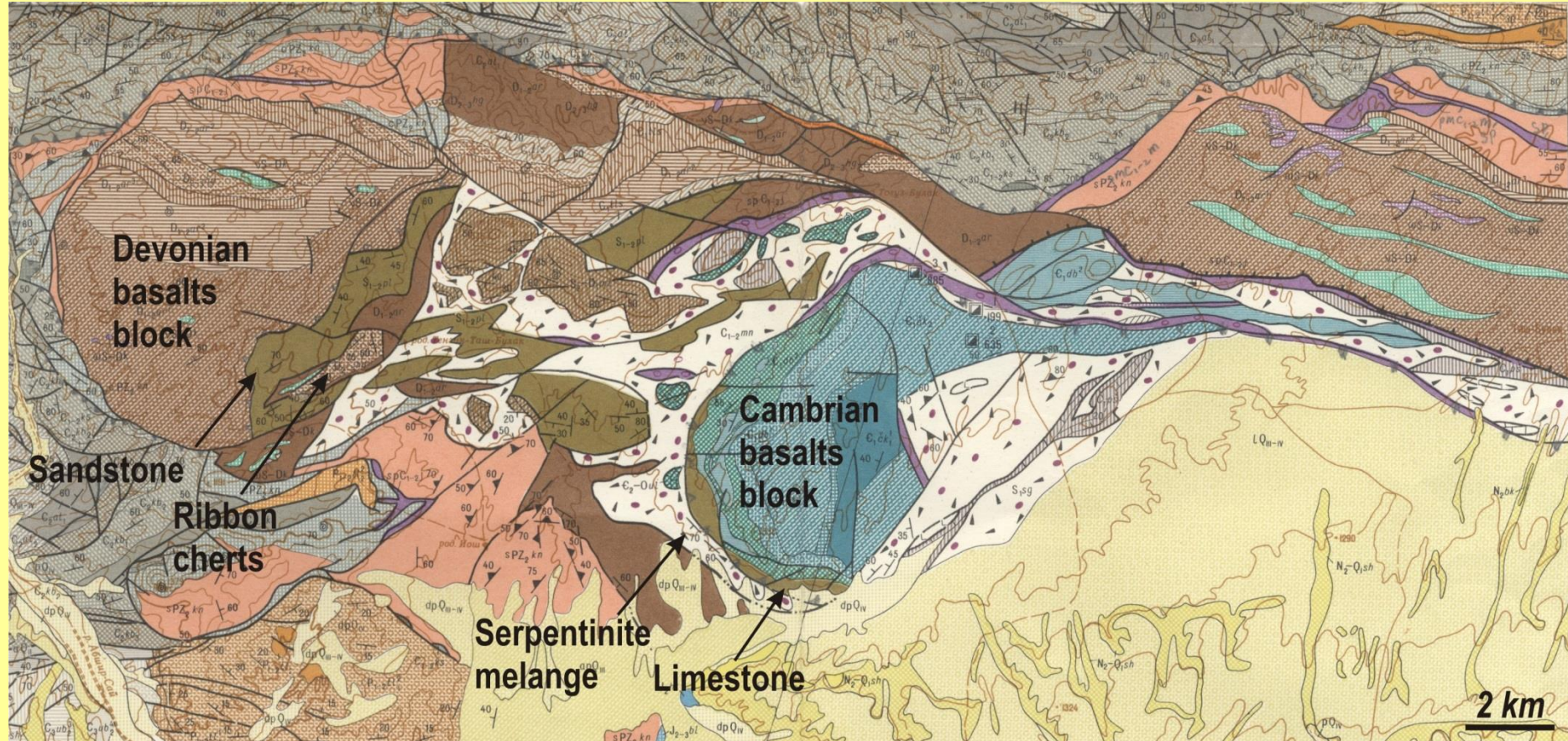


A report on the expedition to Kyrgyzstan, 2017

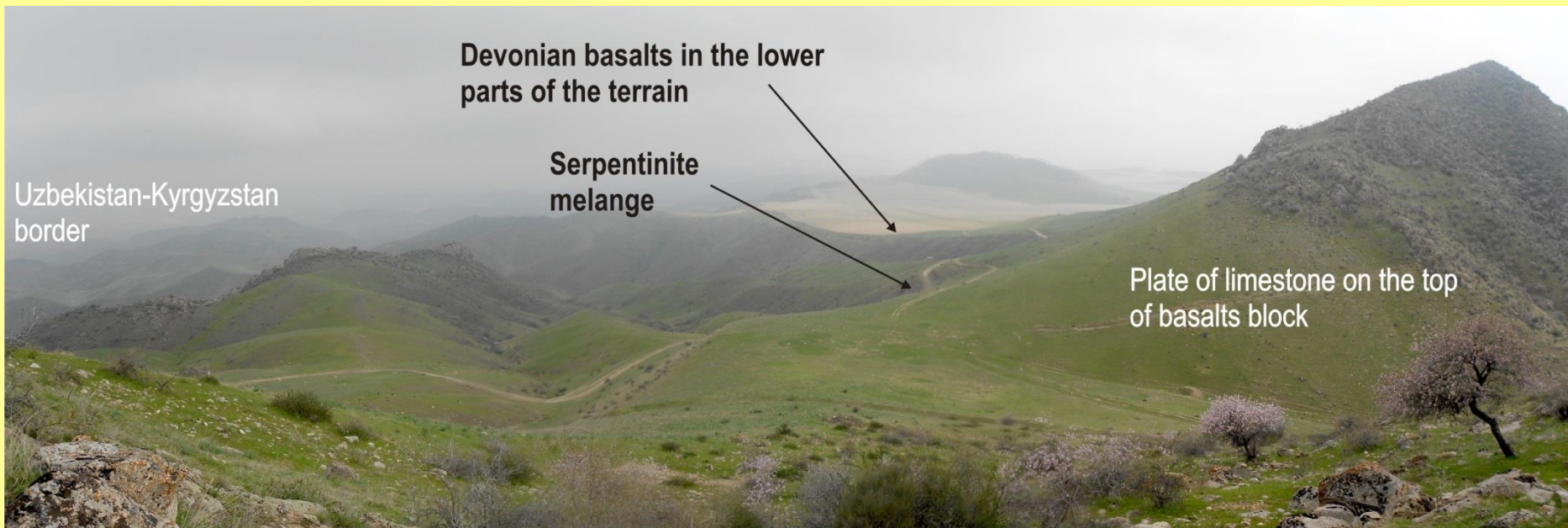


Kyrgyzstan-Uzbekistan border. Kyzyl-Kiya city area.
Ulug-Tau district.

The fragment of the geological map of the Ulug-Tau district



The district consists of thrust tectonic plates of basalts, sandstones, limestones and cherts



Flowering wild Sakura in April



Ulug-Tau (*turkic*) – Garlics mountain

Thrust plates inside the basalts block

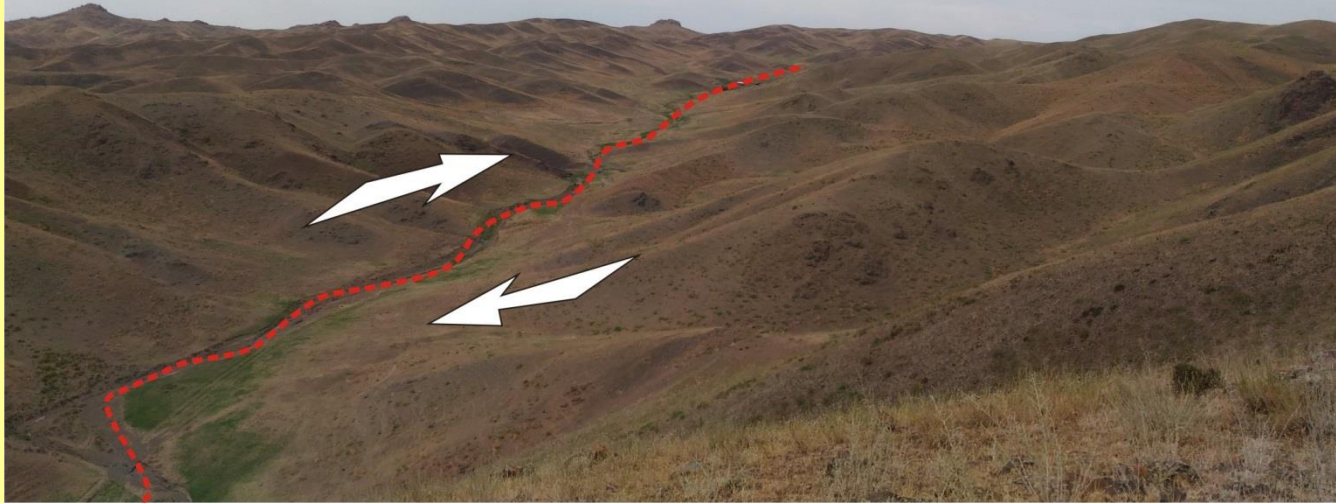
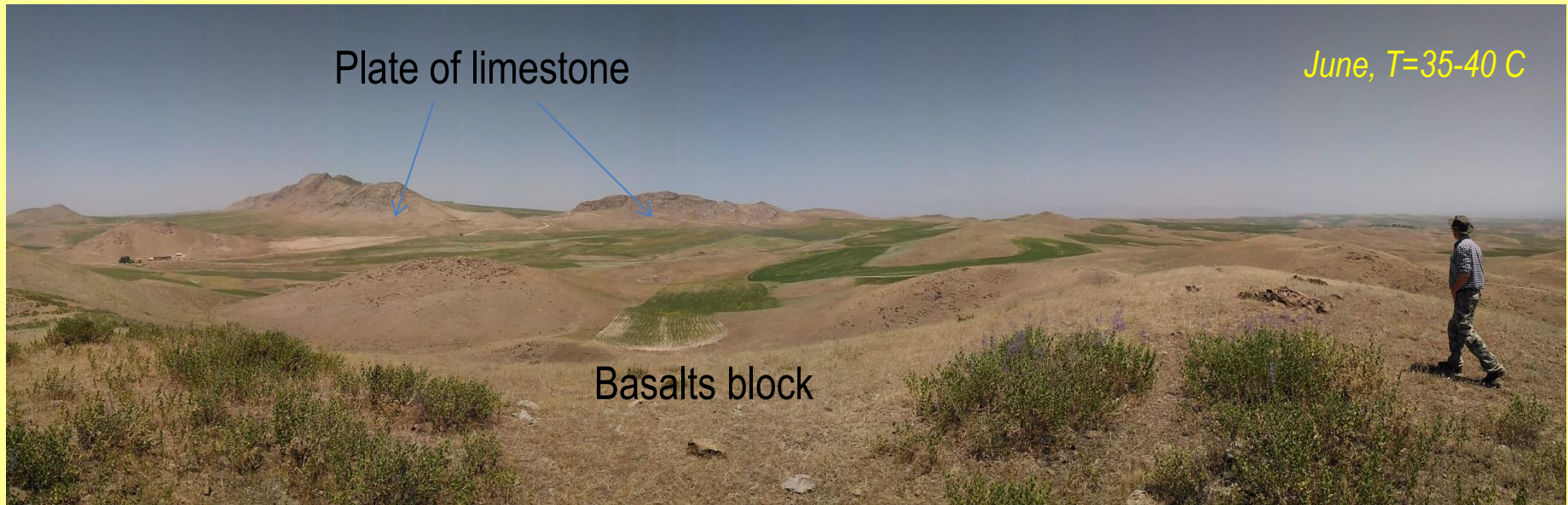


Plate of limestone

June, T=35-40 C



Basalts block



The photos of the main type of basaltic pillow lavas:
(a).Cambrian amygdaloidal basalts.



(b).Devonian porphyritic basalts

The photo of the limestone's plate



The photos of the ribbon cherts



Thanks

