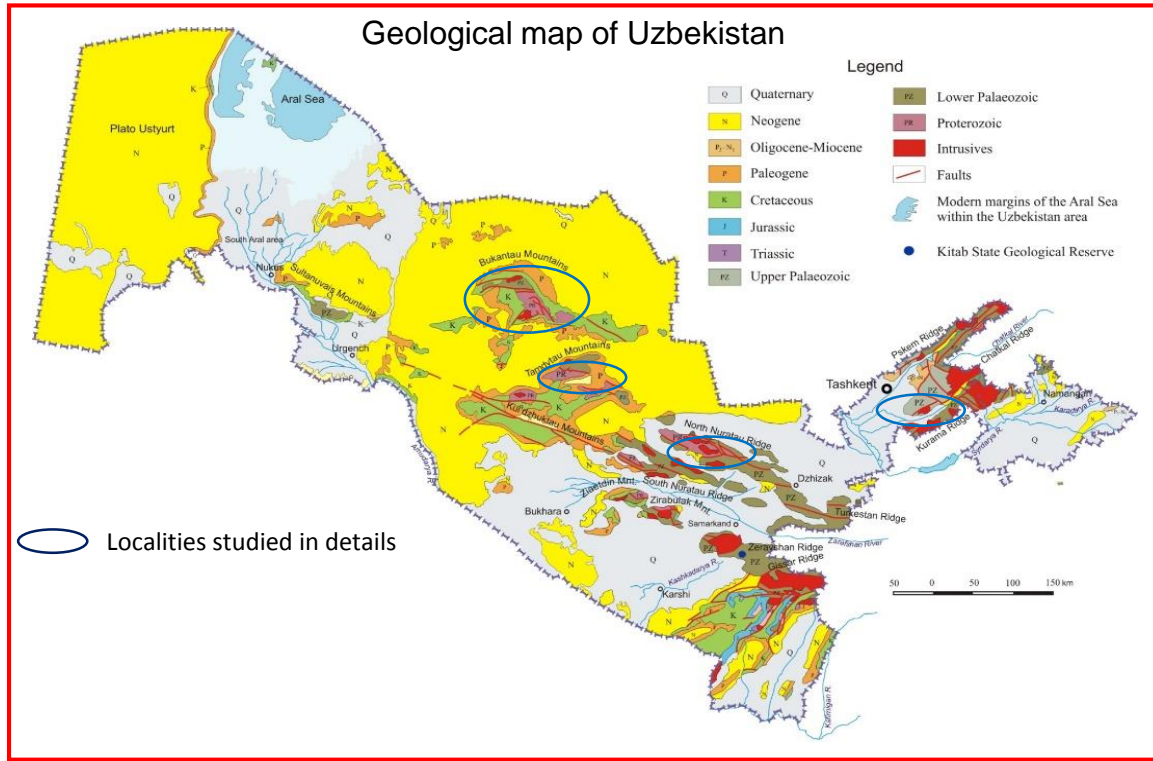


Field trip in Uzbekistan

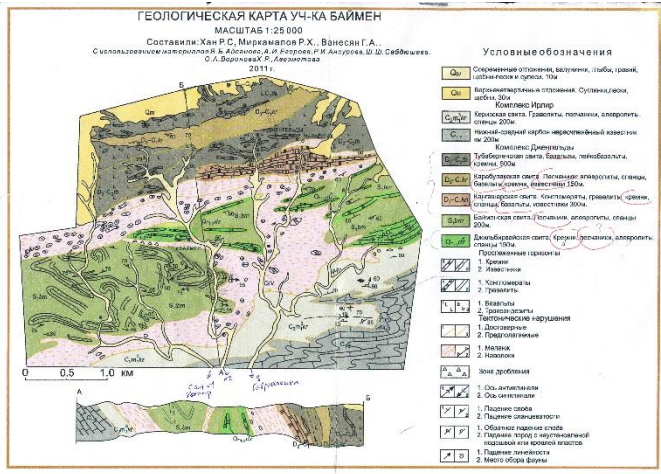


Four localities in the Central and Southern Tien Shan in the western Central Asian Orogenic Belt have been studied in details. Field investigations were carried out in the central and eastern Uzbekistan:

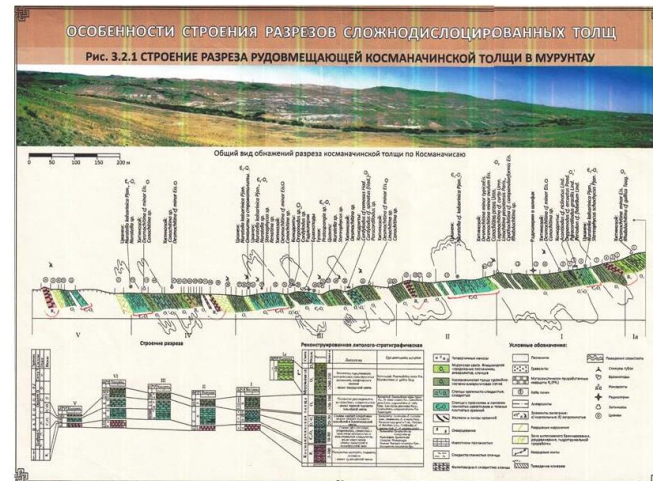
- Bukantau mountains,
- Tamdytau mountains,
- North Nuratau Rigde,
- Chatkalo-Kurama Ridge.

We carefully studied and mapped OPS units and subduction complexes. We sampled felsic to mafic igneous rocks (basalts, ultramafics, granites, granodiorites) for geochemistry and U-Pb zircon dating and sedimentary rocks (cherts, mudstones, sandstones) for micropaleontology and U-Pb zircon dating. In addition we performed a detailed study of ductile deformations.

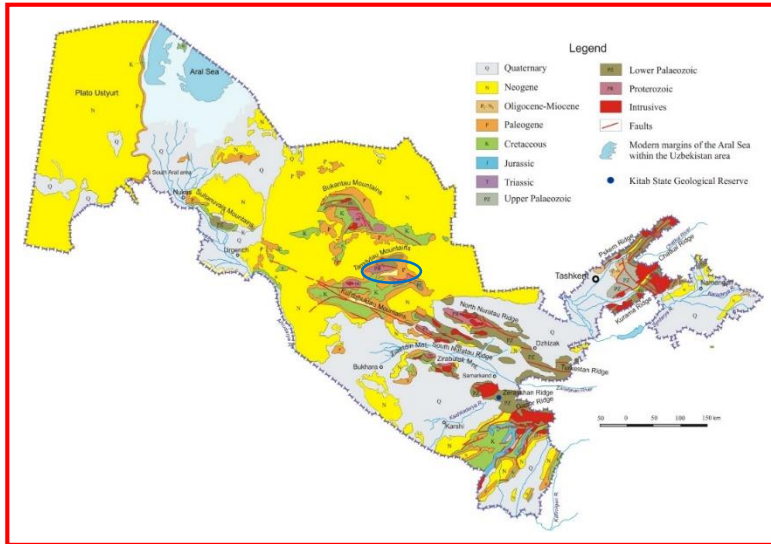
Geological scheme of the Baimen site, Bukantau Mnt.



A section across the Kosmanachi Fm., Tamdytau Mnt.



Detailed study of the Tamdytau locality



Pillow-basalts, East Tamdytau



Contact between chert and pillow-basalt



Aphyric and amygdaloid pillow-basalts



Trachytic inclusion in the amygdaloid basalt, Elemesashchi Formation



Detailed study of the Tamdytau locality

Kosmanachi Formation ribbon chert



Intercalation of siltstone, siliceous mudstone and chert, Besapan Formation

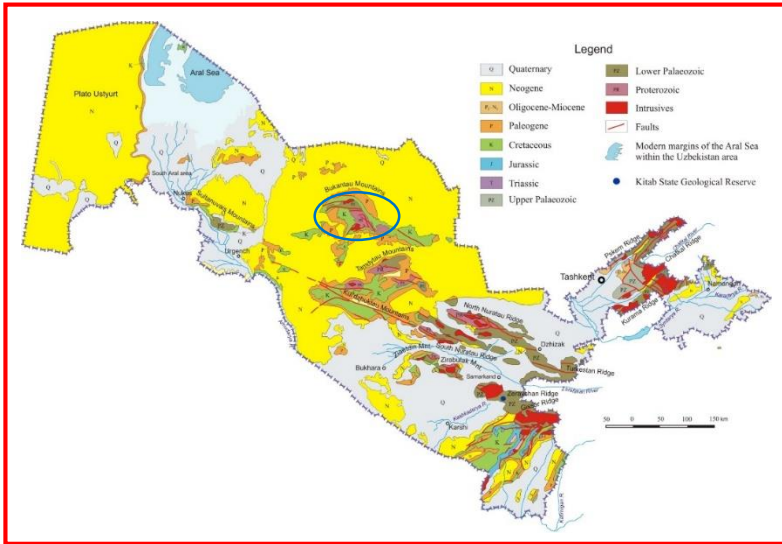


Elemesashchi Formation ribbon cherts, Elemesashchi well



Detailed study of the Bukantau locality

A range of basaltic hills, NW of Kulkuduk



Ribbon cherts

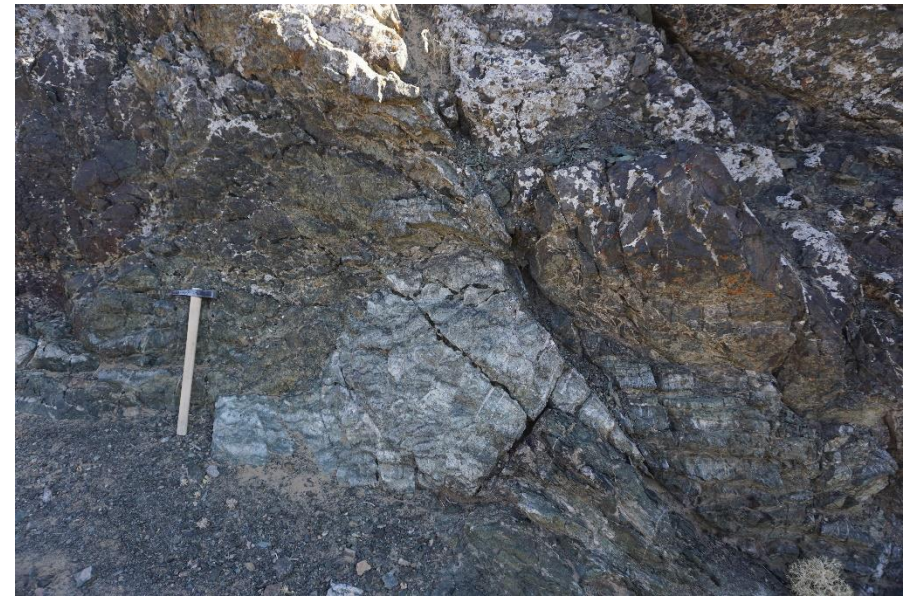


Detailed study of the Bukantau locality

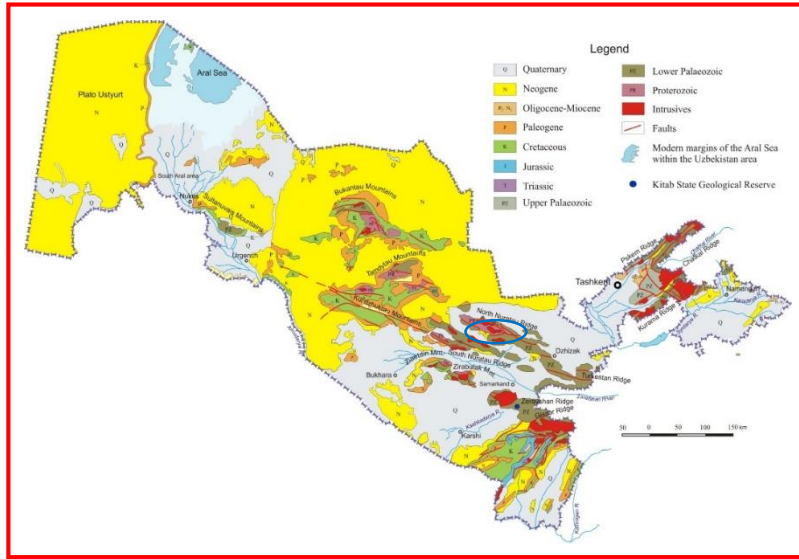
Ribbon cherts, 2 km NW Kulkuduk



Ribbon cherts, Baimen well



Detailed study of the North Nuratau Ridge locality



Pillow-basalts



Intercalated limestone and chert, north boundary of the Bogambir range



Sampling of basalts



Detailed study of the North Nuratau Ridge locality

Sampling of sandstones for U-Pb zircon dating



Contact of gabbro and siltstone



Gabbro



Sandstone



Chert

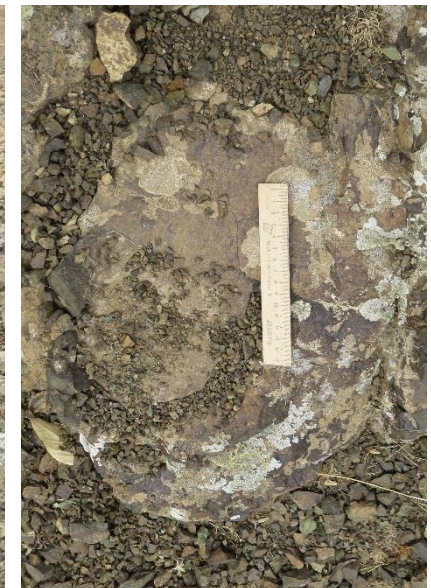


Detailed study of the North Nuratau Ridge locality

Turbidites (intercalation of sandstones and silty mudstones) with basalts underneath (typical OPS example)



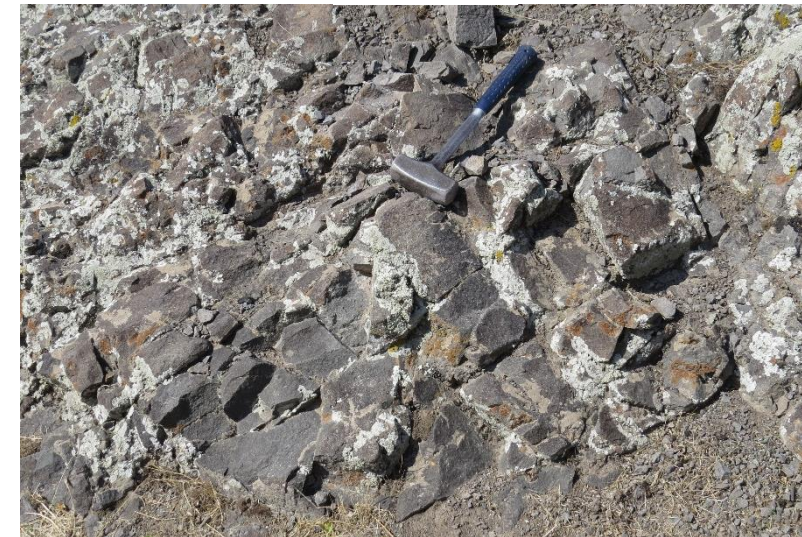
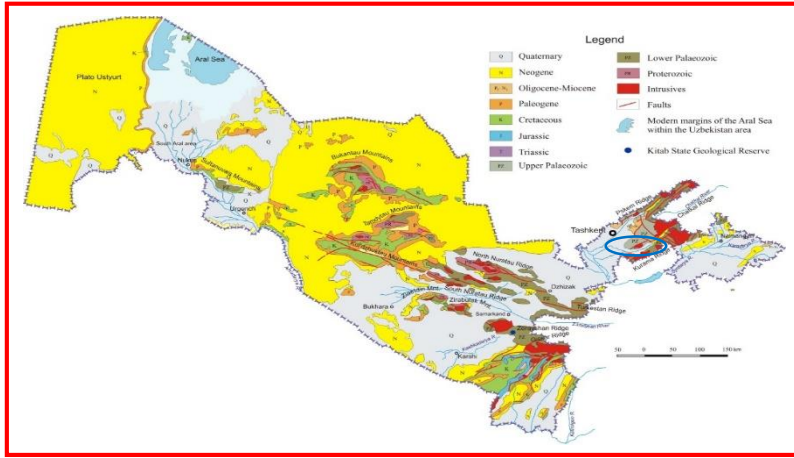
Sampling of basalts



Detailed study of the Chatkalo-Kurama Ridge locality

Granite

Andesite



Mafic rocks from Karabash massif



Sorting the samples in field

